

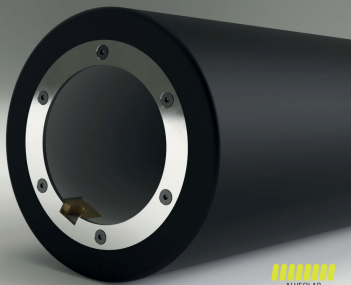
Sleeve

Line:

Statcyl

Plate Sleeve made of epoxy-based composite and electrostatic conductive carbon.

Resistant to aggressive solvents and high dimensional stability.



(Optional: Metal protective ring)

Main Properties

- Resistance to aggressive solvents. Completely encapsulated, it avoids the absorption of solvents and moisture.
- Coated with carbon-based material the enables a right static current generated during printing process.
- The exclusive alveolar structure confers the product an optimum balance between strength, stability and low weight.
- Lateral sides protected by anti-impact material.
- Suitable for high speed Printing.
- Surface that enables an optimal adhesion as well as an easy removal of the tape after printing
- Metal notch from 6mm-thickness.
- Internal protection (optional):
Metal protective ring on the notch side to avoid internal damages for thicknesses > 12 mm.

Technical specifications

- Tolerance:
TIR \leq 0.020mm
(Mounted on a mandrel with a \leq 0.005mm TIR)
Outer Diameter +/- 0.02mm
- Hardness:
75 - 80 shore D
- Working temperature:
16°C - 40°C
- Working pressure and flow rate:
6 - 8 bar and 12 liters/sec.
- Electrical Resistance: < 1 M Ω m
- Available with a layer thickness from 1.5 mm to 150 mm. Ask for bigger sizes.