

# Sleeve

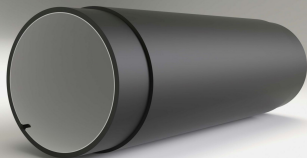
Line: **Printcyl**

*Flexible sleeve for continuous printing.*

**Cylindrical core made of epoxy-based and elastomer coated fiberglass.  
Surface treatment to ensure a proper ink application.**

## Main Properties

- Good resistance to aggressive solvents.
- Smooth mounting and good fixation on the mandrel.
- Suitable for high speed Printing.
- High resilience.
- Ozone resistant.
- Antistatic properties.



## Technical specifications

- Tolerance: TIR  $\leq 0.03\text{mm}$   
(Mounted on a mandrel with a  $\leq 0.005\text{ mm TIR}$ )
- Hardness:  
60 - 85 shore A
- Working pressure and flow rate:  
6 - 8 bar and 12 litros/seg.
- Working temperature:  
16°C - 45°C