

Bridge Sleeve Line: Epocyl

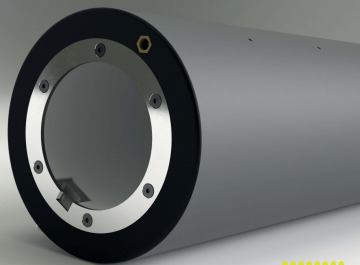
Bridge sleeve made of epoxy-based composite material.

Excellent dimensional stability and very low weight due to the alveolar design developed to deal with high thicknesses.



Main Properties

- Optimum distribution of surface air allowing easy mounting/dismounting of the sleeves.
- Resistance to aggressive solvents. Completely encapsulated, it avoids the absorption of solvents and moisture.
- The exclusive alveolar structure confers the product an optimum balance between strength, stability and low weight.
- Lateral sides protected by anti-impact material.
- Suitable for high speed Printing.
- Smooth mounting and good fixation on the mandrel.
- Internal Protection:
Metal protective ring on the notch side to avoid internal damages.



Technical specifications

- Tolerance:
TIR \leq 0.015mm
(Mounted on a mandrel with a \leq 0.005 mm TIR
Outer Diameter +/- 0.015mm)
- Hardness:
75 - 80 shore D
- Working temperature:
16°C - 40°C
- Working pressure and flow rate:
6 - 8 bar and 12 liters/sec.
- Available with a layer thickness from 12 mm to 150 mm, for air bridge sleeve and flow-through bridge sleeve. Ask for bigger sizes.